

Heavy Duty Comb Binder SD2010B21

20 Sheets
Punching Capacity

- Accurate binding system perfect documentary binding
- Extra small binding handle quick for binding
- Full steel structure, solid for long time service.
- Carbon hardened blades, ever sharp for punching.
- Powerful punching mechanism, punch up to 20 sheets.
- 21 blades & 21 blades-free pins, multi binding available.



FULLY MANUAL. FULLY METAL BODY.

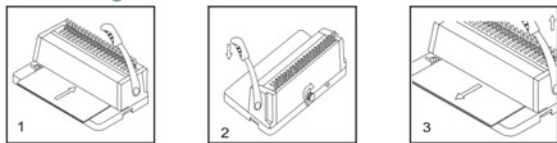


Performance Description

1. Place your new machine on top of a sturdy working table. See pic1.
2. Remove the screw from the punching axle. Insert the punching handle, in a vertical position, onto the punching axle and tighten back the screw into the punching axle. (Make sure the screw is well fastened).



Punching:



1. Insert up to 20 sheets of paper 80gsm(20lbs) into your machine.

2. Align these sheets against the side margin control & pull the punch handle down.

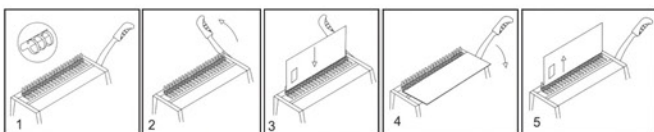
3. Pull handle back (up) & remove sheets. Repeat steps 1,2,3 until you have punched your entire document.

Remark:

1. Punching of plastic sheet: Always insert 1pc at a time. Max. thickness: 0.4mm. When punching, always have a paper sheet under the plastic. Disobeying any of these requirements may cause **SERIOUS FAILURE** of the unit.

2. Do not forget to periodically empty your machine's waste drawer, as needed.

Binding:



1. Place comb onto the comb-binding guide. Make sure the comb opening is facing up.

2. Pull the bind handle to open the comb.

3. Insert the punched document onto the comb.

4. Pull the bind handle forward to close the comb.

5. Remove your new bound document.

Specification

Size	Sheet Capacity	Margin
6mm (1/4")	20	2mm
8mm (5/16")	40	3mm
10mm (3/8")	70	4mm
12mm (1/2")	100	5mm
14mm (9/16")	120	6mm
16mm (5/8")	140	7mm
19mm (3/4")	160	8mm
22mm (7/8")	200	8mm
25mm (1")	240	8mm
28mm (1-1/8")	250	8mm

Adjust the side margin control in order to center your document on the punch throat ruler. Important: you may want to punch a waste piece of paper to double check that your document will be evenly centered.

Model	SD2010B21
Max. Paper Size	A4 (Europe) or Letter (America)
No. of Punches	21 (Europe) or 19 (America)
Single Punch Capacity	Up to 20 sheets of 20Lbs (80gsm)
Max. Binding Capacity	500 sheets/51m ring (800gsm)
Side Margin Control	Included
Punch Margin Control	Included (2mm to 8mm)
Hole Size (mm)	3x8
Hole Quantity (pcs)	21
Blades Free Pins (pcs)	1-21
Extra Binding Handle	Yes
Weight	14Kg
Dimensions(DxHxW):	180mmx320mmx430mm
Warranty	1 year
Made from	UK

