

Office Use Comb Binder SD1200

10 Sheets
Punching Capacity

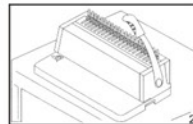
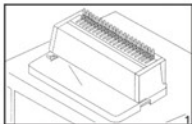
Thank you for purchasing SD1200 Europe Comb Binder, the universal calendar and booklet maker. The highly advanced functions and design come in a compact size that saves your office space. Enjoy our SD1200 Europe Comb Binder for your document and booklet presentation.

Please read these instructions carefully to get the most out of our system for many years of trouble-free service.



Performance Description

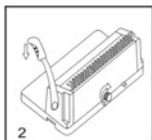
1. Place your new machine on top of a sturdy working table. See pic1.
2. Remove the screw from the punching axle. Insert the punching handle, in a vertical position, onto the punching axle and tighten back the screw into the punching axle. (Make sure the screw is well fastened).



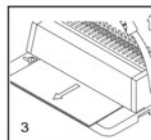
Punching:



1. Insert up to 10 sheets of paper 80gsm(20lbs) into your machine.



2. Align these sheets against the side margin control & pull the punch handle down.



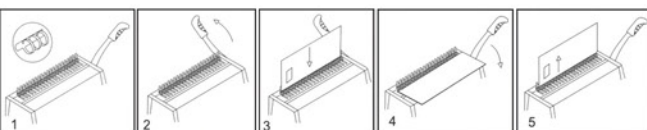
3. Pull handle back (up) & remove sheets. Repeat steps 1,2,3 until you have punched your entire document.

Remark:

1. Punching of plastic sheet: Always insert 1pc at a time. Max. thickness: 0.4mm. When punching, always have a paper sheet under the plastic. Disobeying any of these requirements may cause **SERIOUS FAILURE** of the unit.

2. Do not forget to periodically empty your machine's waste drawer, as needed.

Binding:



1. Place comb onto the comb-binding guide. Make sure the comb opening is facing up.

2. Pull the bind handle to open the comb.

3. Insert the punched document onto the comb.

4. Pull the bind handle forward to close the comb.

5. Remove your new bound document.

Specification

| Size | Sheet Capacity | Margin |
|---------------|----------------|--------|
| 6mm (1/4") | 20 | 2mm |
| 8mm (5/16") | 40 | 3mm |
| 10mm (3/8") | 70 | 4mm |
| 12mm (1/2") | 100 | 5mm |
| 14mm (9/16") | 120 | 6mm |
| 16mm (5/8") | 140 | 7mm |
| 19mm (3/4") | 160 | 8mm |
| 22mm (7/8") | 200 | 8mm |
| 25mm (1") | 240 | 8mm |
| 28mm (1-1/8") | 250 | 8mm |

Adjust the side margin control in order to center your document on the punch throat ruler. Important: you may want to punch a waste piece of paper to double check that your document will be evenly centered.

| | |
|------------------------|----------------------------------|
| Model | Com Binder SD1200 |
| Max. Paper Size | A4 (Europe) or Letter (America) |
| No. of Punches | 21 (Europe) or 19 (America) |
| Single Punch Capacity | Up to 10 sheets of 20Lbs (80gsm) |
| Max. Binding Capacity | 250 sheets/28mm ring (800gsm) |
| Side Margin Control | Included |
| Punch Margin Control | Included (2mm to 8mm) |
| Hole Size (mm) | 3x8 |
| Hole Quantity (pcs) | 21 |
| Blades Free Pins (pcs) | No |
| Extra Binding Handle | No |
| Weight | 11.1Lbs (5.5Kg) |
| Dimensions(DxHxW): | 366mmx220mmx150mm |
| Warranty | 1 year |
| Made from | UK |

